

# Ground Mounting System



Customized available



Pre-assembled

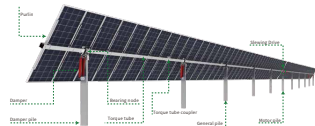


High-strength & reliable



Optimization solution

## 1P Horizontal Single-axis Tracker



Solution with drawing driver have a longer life.

Solution with single drawing driver, lower maintenance cost.



Equipped with damper to decrease the amplitude.



The tracker length can be up to 90m.

### Specifications

跟踪形式 Tracking Type	单轴独立驱动跟踪系统 1P Horizontal Single-axis Tracker System with Single-point Drive	通讯方式 Communication	RS485 / ZigBee / LoRa
跟踪角度 Range of Motion	±60°, ±40°	供电方式 Power Supply	跟踪供电/交流供电/独立跟踪供电 Powered by PV string, Powered by AC
跟踪精度 Tracking Accuracy	±1°	工作环境温度 Working Temperature	-30°C-60°C
驱动形式 Motor Type	单点跟踪电机驱动, 24V直流电机 Single Stringing Drive, 24V DC Motor	坡度要求 Terrain Adaptability	坡度达20%, 长周期无限制 20% to 5 Slope, Unlimited E-W Slope
跟踪长度 Tracker Length	≤90m	地面覆盖率 GCR (Ground Coverage Ratio)	25%-45%
抗风能力 Wind Tolerance	47m/s (SACE 7-14)	跟踪形式 Foundation Type	桩基础/灌注桩/管桩/PC管桩/管桩 Piling, Concrete with Pile, PVC, Concrete with Pile
日均耗电量 Daily Energy Consumption	≤0.08kWh	结构材料 Material	热浸镀锌/镀锌铝/镀锌铝 HDC (Hot dipped Galvanized), Pre-HDC, 240-Mg
防护等级 IP Class	IP 65	结构件质保年限 Structure Period	10年 10 Years on Structural Components
跟踪运行模式 Mode	光照追踪/温度追踪/日照跟踪/手动跟踪 光照/温度/日照跟踪 Solar Tracking Mode, Temperature Mode, Sun Tracking Mode/Manual Tracking Mode (Manual Operation)	电气件质保年限 Electrical Parts	5年 5 Years on Electrical Parts

## U-shaped Pole Ground Mounting System



Component



GM-US-C02



GM-US-B00



GM-R05



GM-US-C01



GM-AG1-S2



GM-BR-01



GM-AG1-H01



GM-R03

Specifications

支架倾斜角度:0°-45°  
Tilt Angle

风载:42m/s  
Wind Load

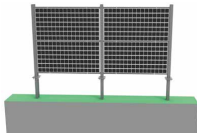
雪载:1.4KN/m<sup>2</sup>  
Snow Load

材质:热镀锌、铝合金  
Material: HDG steel, AL6005-T5

Feature

部件使用AL6005-T5高强度铝合金及热镀锌钢, 防腐性能强  
Made of high-quality AL6005-T5 and HDG steel, with strong anti-corrosion performance.

## Vertical Mounting System



Component



GM-CS-VP-01



GM-CS-VP-02



GM-XLM-1.2-R01



GM-XLM-T-JZ-01A



GM-MC-XLM-T



GM-EC-3S-XLM-T

Specifications

支架倾斜角度:90°  
Tilt Angle

风载:60m/s  
Wind Load

雪载:3KN/m<sup>2</sup>  
Snow Load

材质:热镀锌、锌铝镁  
Material: HDG steel, Zn-Al-Mg steel

Feature

独特的安装结构, 安装便捷  
Structure, easy and fast installation.

占地面积小, 充分利用土地  
Small footprint, fully utilizing the land.

适应项目围栏, 高速围护等  
Suitable for project fence, expressway fence and so on.

材料耐腐蚀, 适用C1-C5环境  
Strong corrosion resistance  
suitable for environments ranging from C1 to C5.

三维可调整安装精度, 面板与支架平齐, 无遮挡, 背面也无遮挡  
The installation accuracy can be adjusted in three dimensions, the panel is flush with the mount, and both sides of the panel are unobstructed.

## Zn-Al-Mg Ground Mounting System



### Component



GM-C80-1.2



GM-C80-1.2



GM-NJB-C80-1.0



GM-L-801



GM-MC-XLM-C



GM-EC-35-XLM-C

### Specifications

支架倾斜角度:0°-30°  
Tilt Angle

风载:60m/s  
Wind Load

雪载:1.4KN/m<sup>2</sup>  
Snow Load

材质:锌铝镁  
Material: Zn-Al-Mg steel

### Feature

镀锌铝镁耐腐蚀性更高,具有自我修复功能,无需定期维护,降低运营成本  
Better corrosion & wear resistance and self-repairing feature, no need regular maintenance.

镀锌铝镁耐腐蚀性强,性价比优于热镀锌  
Stronger corrosion resistance, cost effective than hot-dip galvanized steel structures.

## Zn-Al-Mg Ground Mounting System II



### Component



GM-EC-40-XLM-T



GM-MC-XLM-T



GM-XLM-1.0-R01



GM-XLM-1.0-R02



GM-XLM-1.0-SA



GM-XLM-801



GM-XLM-80-01



GM-XLM-R5-01



GM-XLM-U01

### Specifications

支架倾斜角度:0°-30°  
Tilt Angle

风载:60m/s  
Wind Load

雪载:1.4KN/m<sup>2</sup>  
Snow Load

材质:锌铝镁  
Material: Zn-Al-Mg steel

### Feature

相较于C型钢铝镁稳定性更强,适合大风和大雪环境  
More stable than C profile rack, especially suitable for areas with strong wind and heavy snow.

独特的箱型结构  
Original box-type stack structure.

## Carbon Steel Single Pole Mounting System



### Component



GM-HF-01



GM-HF-03



GM-HF-04



GM-HF-06



GM-HF-07



GM-NY-08



GM-NY-09



GM-NY-10



GM-NY-11

### Specifications

支架倾斜角度:0°-45°  
Tilt Angle

风载:40m/s  
Wind Load

雪载:1.4KN/m<sup>2</sup>  
Snow Load

材质:铝合金、碳钢、不锈钢  
Material:AL6005-T5, Q235B, SUS304

### Feature

结构简单, 安装方便, 快捷  
Simple structure & easy and fast installation.

适用崎岖地面, 减少整地与施工时间  
Suitable for rugged ground to reduce land preparation and construction time.

## Carbon Steel Dual Pole Mounting System



### Component



GM-HF-01



GM-HF-06



GM-HF-07



GM-HF-05



GM-HF-06



GM-HF-07



GM-NY-08



GM-NY-09



GM-NY-10



GM-NY-11

### Specifications

支架倾斜角度:0°-45°  
Tilt Angle

风载:42m/s  
Wind Load

雪载:1.4KN/m<sup>2</sup>  
Snow Load

材质:铝合金、碳钢、不锈钢  
Material:AL6005-T5, Q235B, SUS304

### Feature

立柱、斜撑采用抱箍式固定连接, 方便支架调节, 避免施工浪费  
Columns and inclined support adopt hoop type fixed connection to facilitate bracket adjustment and avoid construction wastes.

结构简单, 安装方便, 快捷  
Simple structure & easy and fast installation.



## Aluminum Ground Mounting System V



### Component



GM-AG5-B02



GM-BR-01-Q



GM-AG5-R01



GM-AG5-B03



GM-R43



GM-EC-40-G5



GM-MC-40-G5



GM-AG5-S

### Specifications

支架倾斜角度:0°-45°  
Tilt Angle

风载:35m/s  
Wind Load

雪载:0.5KN/m<sup>2</sup>  
Snow Load

材质:铝合金、不锈钢  
Material:AL6005-T5, SUS304

### Feature

螺栓代替H连接件, 安装简便, 精度更高  
Use bolt connection instead of H connector for easier installation.

专为低风雷地区开发, 因地制宜, 有效降低成本  
Cost effective design for projects with low wind & snow loads.

离地高低于500mm时, 建议做成无射脚  
From leg, low solution recommended for ground clearance less than 500mm.

使用新型T型块设计, 真正实现了可单人安装电池板  
New T-Fracts design to enable panel installation by one person and save the labor cost.

## Aluminum Ground Mounting System VI



### Component



GM-AG6-B02



GM-BR-01



GM-MC-35-Q



GM-AG6-CH01



GM-AG6-CH02



GM-R31



GM-R50



GM-AG6-S

### Specifications

支架倾斜角度:0°-45°  
Tilt Angle

风载:35m/s  
Wind Load

雪载:1KN/m<sup>2</sup>  
Snow Load

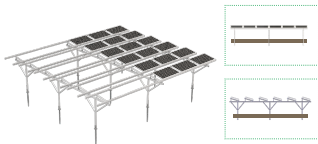
材质:铝合金、不锈钢  
Material:AL6005-T5, SUS304

### Feature

对应低风雷条件  
Designed for projects with low wind & snow loads.

立柱结构优化, 强度增加, 节约成本  
Optimized structure, reduce the costs while strength ensured.

## Farmland Mounting System



### Component



GM-AG2-B06



GM-AG2-S3



GM-R20



GM-R21



GM-AG2-B07



GM-BR-01-Q



GM-EC-33-Q

### Specifications

支架倾斜角度:0°-30°  
Tilt Angle

风载:45m/s  
Wind Load

雪载:1.4KN/m<sup>2</sup>  
Snow Load

材质:铝合金、不锈钢  
Material:AL6005-T5,SUS304

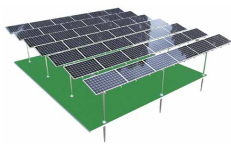
### Feature

防腐性强  
Strong anti-corrosion performance.

强度大,可承受大的阳雪、台风  
Resistant for strong wind & snow loads.

农业+太阳能发电,能充分利用土地  
Economize the land utilization with agricultural farming and solar power generation.

## Farmland Mounting System II



### Component



GM-XLM-2.0-R03



GM-AG5-S3



GM-FG4-B01



GM-AG2-B06



GM-BR-01-Q

### Specifications

支架倾斜角度:0°-30°  
Tilt Angle

风载:45m/s  
Wind Load

雪载:1.4KN/m<sup>2</sup>  
Snow Load

材质:铸铝镁、铝合金  
Material:ZAM,AL6005-T5

### Feature

相较铝合金支架价格低20%  
20% cheaper than aluminum farmland mounting system.

强度大,可承受大的阳雪、台风  
Resistant for strong wind & snow loads.

农业+太阳能发电,能充分利用土地  
Economize the land utilization with agricultural farming and solar power generation.

防腐性强  
Strong anti-corrosion performance.

## Carport Mounting System



Customized available



Pre-assembled

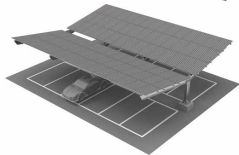


High-strength & reliable



Optimization solution

## Single/Double-sided Solar Carport Mounting System



### Specifications

支架倾斜角度:10°  
Tilt Angle

风速:40m/s  
Wind Load

雪载:3KN/m<sup>2</sup>  
Snow Load

材质:热镀锌  
Material:HDC steel

### Feature

该系统广泛应用于社区、企业、工厂和商业区的停车场。  
This application of the system is widely used in parking lots in communities, enterprises, factories, and business circles.

可以利用太阳能发电, 实现照明, 同时为电动汽车充电。  
It can use solar energy to generate electricity, realize lighting, and charge electric vehicles at the same time.

它可以为车辆遮风挡雨, 避免长期暴露在阳光下对车辆造成损坏。  
It can shield the vehicle from wind and rain, avoid damage to the vehicle by long-term exposure to sunlight.

## Carpark I - Water Proof Style



### Component



GM-AG4-B01



GM-MC-35-FX



GM-CP-B02



GM-R06



GM-R07



GM-CP-S



GM-BR-01



GM-R71



GM-FSGD-01

### Specifications

支架倾斜角度:0°-15°  
Tilt Angle

风载:60m/s  
Wind Load

雪载:3KN/m<sup>2</sup>  
Snow Load

材质:铝合金、不锈钢  
Material:AL6005-T5, SUS304

### Feature

6005-T5铝合金和304不锈钢, 高强度, 耐腐蚀性强  
Made of high-quality AL6005-T5 & SUS304 applied, with strong anti-corrosion performance.

可承受大的积雪、台风, 防水效果好  
Resistant for strong wind & snow loads, excellent water-proof.

停车+太阳能发电, 充分利用土地资源  
Car parking & solar power generator, existing land fully utilized.

## Carpark II



### Component



GM-M14-S40



GM-BR-01



GM-R07



GM-CP-S



GM-CP1-B01



GM-EC-35



GM-R06



W-9L-02-LP

### Specifications

支架倾斜角度:0°-15°  
Tilt Angle

风载:60m/s  
Wind Load

雪载:3KN/m<sup>2</sup>  
Snow Load

材质:铝合金、不锈钢  
Material:AL6005-T5, SUS304

### Feature

AL6005-T5铝合金和304不锈钢, 高强度, 耐腐蚀性强  
Made of high-quality AL6005-T5 & SUS304 applied, with strong anti-corrosion performance.

强度高, 可承受大的积雪、台风 (不防水)  
Resistant for strong wind & snow loads (without water-proof).

停车+太阳能发电, 充分利用土地资源  
Economize the land utilization with parking and solar power generation.

## Ground Screws



Ground Screw Styles



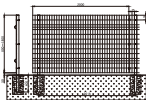
### Feature

热镀锌防腐性能强。每根地桩镀锌厚度都经过测厚仪严格检验，平均厚度：80 微米。  
Made by high strength carbon steel with 80 micron average galvanizing thickness to ensure high anti-corrosion.

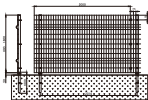
可根据施工地的地面条件定制。  
Customized available.

## Solar Farm Fence

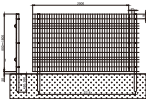
### Style 1



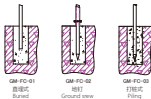
### Style 2



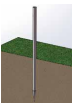
### Style 3



### Post installation options



### Post installation



将地钉打入地里  
Drive the ground screw into the soil.



将柱子套进地钉里  
Put the post into the ground screw.

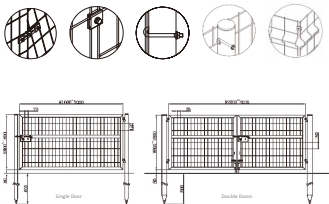


调整柱子高度  
Adjust the post's height.



用螺栓锁紧柱子和地钉  
Fix the post and ground screw with bolts.

## Wire mesh connection styles



## About Installation

### Mounting Structure Type

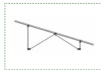


2段, 3段, 4段, 5段 2rows, 3rows, 4rows, 5rows



多段 more than 5 rows

### Pre-assembled Parts



主梁, 斜支撐管, 前板立柱均裝前裝相裝

Front & back legs, beam and reinforced pipes are pre-assembled before shipment.

### Installation Steps



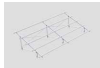
打地桩  
Drive ground screws into the soil



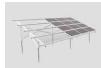
預組裝固定  
Mount pre-assembled parts



預組裝與地桩固定  
Factor ground covers and pre-assembled parts



裝軌道和斜支撐  
Assemble rails and reinforced pipes



安裝太陽能板  
Install solar panels



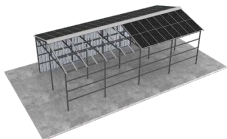
完成  
End



Solar Farm Fence Picture

## Roof Mounting System

## BIPV Roof Mounting System



### Component



GM-XLM-M1



GM-XLM-GC-2C



GM-XLM-NC-35-01



GM-XLM-SC-01



GM-XLM-EC-35-01



GM-XLM-GC-SC-B



GM-BMP-GC

### Specifications

支架倾斜角度:0°-30°  
Tilt Angle

风载:45m/s  
Wind Load

雪载:1.4KN/m<sup>2</sup>  
Snow Load

材质:镀锌钢, 不锈钢  
Material:ZnM, SUS304

### Feature

防水系统配有排水槽, 及时排掉雨水, 有效防止漏雨  
Equipped with drainage tray to avoid water leakage effectively.

能同时配有检修通道, 屋脊板, 采光带等辅材  
Matched with multiple auxiliary materials.

防水轨道安装方便, 同时使整体结构强度增加  
Water-proof rails can be installed easily and increase the structure strength.

透光性好, 可有效提升室内亮度, 同时美化屋顶外观  
Light transmittance for good indoor day-lighting, beautiful appearance.



Customized available



Pre-assembled

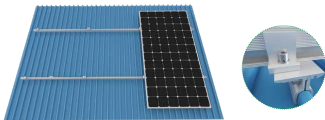


High-strength & reliable



Optimization solution

## Standing Seam Metal Roof Clamps



每一款夹具都为专门的金属瓦设计，由6005-T5铝合金和SUS304不锈钢制成，承载力好，耐腐蚀。安装简单方便，只需要屋顶夹具及面板夹具即可，不破坏屋顶原有的防水系统，可大大节约成本。

Specially designed for specific metal sheet, made of high-quality AL6005-T5 & SUS304 with high strength and anti-corrosion. Easy installation with Kliploks and panel clamps applied, without damage of roof waterproof system, greatly save costs.

### Component



GM-EC-35



GM-MC-35



GM-MBH-07-M-B



GM-R05-light



GM-BR-02

### Specifications

风载:45m/s  
Wind Load

雪载:1.5KN/m<sup>2</sup>  
Snow Load

### Feature

采用优质6005-T5铝合金和304不锈钢，高强度、耐腐蚀

Made of high-quality AL6005-T5 & SUS304 with high strength and anti-corrosion.

良好的防水性能，节约成本

Good water-proof and cost effective.

根据不同的金属瓦尺寸设计

Specially designed for specific metal sheet dimensions.

安装简便，仅需屋顶夹具及面板夹具

Easy installation with Kliploks and panel clamps applied.

## Adjustable Tilt Roof Mounting System



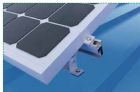
GM-AS-021



GM-AS-200

GM-AS-400

GM-AS-600



### Component



GM-EC-35



GM-MC-35



GM-AS-801



GM-R05-light



GM-AS-400

### Feature

零部件少，安装简便快捷，节省人力成本和安装时间

Few components for easy & fast installation, labor & time cost saved.

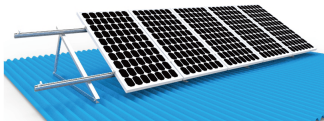
系统灵活可调，根据客户需求调节最佳使用角度

Flexible & adjustable, applicable with different tilt angle ranges.

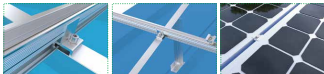




## Tripod Roof Mounting System



Applicable for various rooftops



Component



GM-EC-3S



GM-MC-3S



GM-R05-light



GM-FT10-01

Specifications

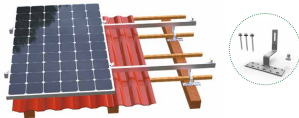
支架倾斜角度: 0°-15°  
Tilt Angle

风载: 42m/s  
Wind Load

雪载: 1.4KN/m<sup>2</sup>  
Snow Load

材质: 铝合金 / 不锈钢  
Material: AL6005-T5, SUS304

## Tile Roof Mounting System



Component



GM-WF-01



GM-MC-3S



GM-CTH-01



GM-R05-light



GM-CTH-02



GM-CTH-03



GM-CTH-04



GM-CTH-05



GM-CTH-06



GM-CTH-07

Specifications

支架倾斜角度: 0°-60°  
Tilt Angle

风载: 72m/s  
Wind Load

雪载: 1.4KN/m<sup>2</sup>  
Snow Load

材质: 铝合金、不锈钢  
Material: AL6005-T5, SUS304

Feature

适用于各类组件及不同类型屋顶  
Applicable for various modules and different rooftops.

零部件种类少, 便于安装  
Few components for easy installation.

采用优质铝合金, 保证强度的同时, 不增加屋面荷载负担  
High-quality aluminum material, light weight while strength ensured.

稳定性强, 抗雪、抗风能力强  
Strong stability to resist snow and wind.

## Roof Mounting Parts List



Customized available



Pre-assembled



High-strength & reliable



Optimization solution

## Roof Mounting Parts List



GM-R06-A



GM-R02-Light



GM-RS-06-A



GM-MC-35-55



GM-EC-35-55



GM-MRH-L5



GM-MRH-04-A



GM-MRH-05



GM-MRH-15



GM-MRH-34



GM-MRH-T-01

## 碳ZAM/HDG Steel Railing & Components



GM-U41X41X1.2

ZAM Steel Rail 1.2

GM-U41X41X2.0

ZAM Steel Rail 2.0



GM-RS-U41X41X2.0-HDG  
Rail Splice

## Roof Mounting Parts List

### Railing



**GM-R56**  
Rail 55x28mm



**GM-R69**  
Rail 52x28mm



**GM-R69-B**  
Rail 52x28mm Black



**GM-R05-light**  
Rail 50x28mm



**GM-RS-56-AZ**  
Rail Joiner #56



**GM-RS-51-AZ**  
Rail Joiner #51



**GM-RS-51-AZ-B**  
Rail Joiner Black



**GM-R11**  
Mini Rail #11



**GM-MRH-T6-150**  
Mini Rail #16



**GM-R87-XJD-01**  
Mini Rail #87

### Tile Roof Hooks



**GM-CTH-01-AZ-02**  
Tile Roof Hook #02



**GM-CTH-01-GC**  
Tile Hook #01



**GM-CTH-01-GC**  
Tile Hook #03 (with L connector)



**GM-CTH-03-AZ**  
Tile Hook Vertical



**GM-CTH-10-AZ**  
Adjustable Tile Hook



**GM-CTH-11-AZ**  
Tile Hook Height Extender



**GM-CTH-04**  
Tile Hook #04



**GM-CTH-13**  
Tile Hook #13



**GM-CTH-15**  
Adjustable Tile Hook

## Roof Mounting Parts List

### Flat Roof Hooks



**GM-STH-04-ST-01**  
Tile Hook with Q225 M6.3\*75 Self-tapping Screw



**GM-STH-06-ST-01**  
Tile Hook with Q225 M6.3\*75 Self-tapping Screw



**GM-STH-01**  
Flat Roof Hook #01



**GM-STH-02**  
Flat Roof Hook #02



**GM-STH-05**  
Flat Roof Hook #05



**GM-CH-L2**  
Waterproof Flat Roof Hook (incl. Feet)

### Tripod and Adjustable Tilt



**GM-FT10/15/20/25/30-01**

5/10/15/20/30 Degree Tripod P

**GM-LAFT-01/02/03**

15°-60° Adjustable Tripod P



**GM-AS-B01-AZ**  
Tilt Front Arm



**GM-AS-400-AZ**  
Tilt Rear Leg 15/30 Degrees



**GM-AS-200-AZ**  
Tilt Rear Leg 10/15 Degrees



**GM-AS-B01-S-D**  
Tilt Front Arm with L Feet



**GM-AS-350-L-D**  
Tilt Rear Leg with L feet



**GM-COBE-FE-10**  
Commercial Tilt Front Arm 10 Degrees



**GM-COBE-RE-10**  
Commercial Tilt Rear Leg 10 Degrees



**GM-COB-BN-01**  
Commercial Tilt Bolt Set

## Roof Mounting Parts List

### Tin Feet



**GM-MRH-L5-07** 80mm L feet with M6.3\*75mm SUS410 Class2 self-tapping screws, for both Steel or Wood purlin

**GM-MRH-L5-06** 80mm L feet with M6.3\*75mm SUS201 Class 2 self-tapping screws, for steel purlin

**GM-MAH-L11-01** 118mm L feet with M6.3\*75mm Q235 self-tapping screw



**GM-MRH-L5-AZ**  
Tin Feet



**GM-MRH-L5-AZ-02**  
Tin Feet



**GM-MRH-L5-AZ-B**  
Black Tin Feet



**GM-MRH-YCJ-AZ**  
Tin Feet Height Extender



**GM-MRH-DS-01**  
Hanger Bolt with Wood Screw



**GM-MRH-DS-02**  
Hanger Bolt with Steel Screw



**GM-MRH-DS**  
Hanger Bolt with Rail Nut



**GM-MRH-LDS-03**  
Hanger Bolt& Feet with Wood Screw



**GM-MRH-LDS-08-D**  
Hanger Bolt with Wood Screw



**JG-GMTYN-61-03**  
Hanger Bolt Pad

## Roof Mounting Parts List

### Metal Roof Kliploks



**GM-MRH-06-AZ**  
Kliplok 406 Interface



**GM-MRH-07-AZ**  
Kliplok 700 Interface



**GM-MRH-07L-AZ**  
Kliplok 700 + L Feet Interface



**GM-MRH-18-AZ**  
Longline 305 Interface



**GM-MRH-20-AZ**  
Universal Kliplok  
406/700 Interface -Big



**GM-MRH-10**  
Kliplok 650 Interface



**GM-MRH-04**  
Kliplok 650 Interface -Big



**GM-MRH-35-GC**  
Universal Kliplok 406/700  
Interface -High



**GM-MRH-25**  
Kliplok 406 Clamp with  
Mini Rail



**GM-MRH-26**  
Kliplok 700 Clamp with  
Mini Rail



**GM-MRH-19-OZ**  
Universal Kliplok 406/700  
Interface



**GM-MRH-05-OZ**  
Standing Seam Metal  
Roof Clamp



**GM-MRH-24-OZ**  
Standing Rib Metal  
Roof Clamp



**GM-MRH-01**  
Trapezoidal Metal Roof  
Clamp #01



**GM-MRH-02**  
Trapezoidal Metal Roof  
Clamp #02



**GM-MRH-03**  
Trapezoidal Metal Roof  
Clamp #03



**GM-MRH-37-GC**  
Trapezoidal Metal Roof  
Clamp #37















**GM-MRH-T4-AZ**  
Trapezoidal Metal Roof  
Clamp #T4

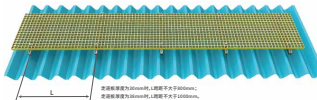
## Roof Mounting Parts List

Mid & End Clamps			
		<b>GM-MC-30(35)-AZ</b> Adjustable Mid Clamp 20/25mm	
<b>GM-MC-30(35)-AZ-B</b> Adjustable Mid Clamp Black		<b>GM-MC-35(40)-AZ</b> Adjustable Mid Clamp 25/40mm	
			
<b>GM-MC-35-AZ</b> Mid Clamp 35mm	<b>GM-MC-30(35)-AZ-4-D</b> Adjustable Mid Clamp 30/35mm	<b>GM-MC-30(35)-AZ-4-B</b> Adjustable Mid Clamp 30/35mm Black	<b>GM-MC-30(35)-AZ-2</b> Adjustable Mid Clamp with Earthing 30/35mm
			
<b>GM-MC-30(35)-AZ-2-B</b> Adjustable Mid Clamp with Earthing 30/35mm Black	<b>GM-EC-30(35)-AZ</b> Adjustable End Clamp 30/35mm	<b>GM-EC-28(30)-AZ</b> Adjustable End Clamp 25/30mm	<b>GM-EC-30(32)-AZ</b> Adjustable End Clamp 30/32mm
			
<b>GM-EC-30(35)-AZ-B</b> Adjustable End Clamp 30/35mm Black	<b>GM-EC-35(40)-AZ</b> Adjustable End Clamp 35/40mm	<b>GM-EC-35-AZ</b> End Clamp 35mm	<b>GM-MC-35-S</b> 35mm Mid Clamp with Steel Nut
			
<b>GM-EC-35(40)-S</b> Adjustable End Clamp with Steel Nut 35/40mm			

## Roof Mounting Parts List

Components			
			
<b>GM-E-EL-AZ</b> Earthing Clip	<b>GM-E-EL-12</b> Earthing Clip	<b>GM-E-EL-04</b> Earthing Clip	<b>GM-EK-AZ</b> Grounding Lug
			
<b>GM-XJ-AZ</b> Cable Clip	<b>GM-BN-X-GCL</b> Cable Clip	<b>GM-CT-AZ</b> Cable Tie	<b>GM-BN-25-AZ</b> T Nut Bolt
			
<b>GM-BR-02</b> Rail Nut	<b>ST6.3X32</b> Self-tapping Screw	<b>ST5.5X25-01</b> Self-drilling Screw	<b>ST5.5X25-05</b> #05 Rail with Spec 50°/28mm

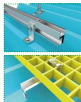
## Rooftop Safety Walkway (L-foot)



The walkway is installed on rooftops for installers and O&M operators to walk safely on the rooftops. It can effectively distribute the pedestrian load on the roof, protecting the roof from unnecessary damage and preventing people from falling.

### Optional Specifications:

3660\*600\*30mm, 3660\*500\*38mm, 3660\*400\*38mm  
3660\*600\*38mm, 3660\*500\*38mm, 3660\*400\*38mm



### Component



固定件(M-clamp)



走道板(Walkway)



L脚(L-foot)



轨道(U-rail)

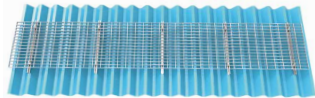
### Feature

承重: 100kg/m<sup>2</sup> (厚度30mm跨距<800mm, 厚度38mm<1000mm)  
Load bearing capacity: 100kg/m<sup>2</sup> (30mm L-foot span<800mm, 38mm L-foot span<1000mm) 标准: J/C/T 1026-2007  
Stand. ref.: J/C/T 1026-2007

多色可选: 黄色、白色、黑色、蓝色、灰色、红色等  
Multi-color options: Yellow, White, Black, Blue, Grey, Red, etc.

材质: 玻璃纖維板, 防火  
Material: Fiberglass-Reinforced Plastic, fireproof.

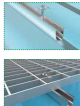
## Rooftop Safety Walkway (Self-tapping Screw)



The walkway is installed on rooftops for installers and O&M operators to walk safely on the rooftops. It can effectively distribute the pedestrian load on the roof, protecting the roof from unnecessary damage and preventing people from falling.

### Optional Material:

Material option 1: Hot-dip Galvanized (H46) Steel, galvanization coating averagely 40µm  
Material option 2: Anodized Aluminum, anodization thickness averagely 10µm



### Component



固定件(M-clamp)



走道板(Walkway)



自攻钉(Self-tapping Screw)



轨道(U-rail)

### Feature

强度高, 重量轻, 便于安装及拆卸  
High strength, light-weight, easy to install and disassemble.

抗氧化, 防腐能力强, 经久耐用  
Aging-resistant, strong anti-corrosion, durable.

外形美观, 表面光泽, 防爆性好  
Fine appearance, bright surface, explosion-proof.

不积污物, 不积雨雪, 易于维护  
Free of dirt, rain or snow, convenient maintenance.